



MOSAIC

Quick start guide

Copyright © 2023 DUALZ SOLUTIONS BV

ALL RIGHTS RESERVED

INFORMATION IN THIS DOCUMENT IS PROTECTED AND CAN NOT BE REPRODUCED IN ANY FORM WITHOUT THE PERMISSION OF DUALZ SOLUTIONS BV.

CONTENTS

Introduction.....	3
Installation & Configuration	3
Recommendation	3
Software installation.....	3
Installation steps.....	4
Licensing	5
Demo setup	6
Desktop shortcuts.....	6
Start demo	7
MOSAIC web server	8

INTRODUCTION

This document describes how to get the Dualz MOSAIC software and running quickly. In demo mode, both the editor and the mosaic player are installed on the same system, and interconnect via local host (127.0.0.1).

A simple configuration with 1 screen is created in trial mode.

INSTALLATION & CONFIGURATION

RECOMMENDATION

The software is running in all current windows versions (not being EOL), English version:

Recommended Operating System is Win10 prof 64 bit. A graphics card, like Nvidia Geforce 1050 Ti, P2200, or better is recommended for best decoding performance.

SOFTWARE INSTALLATION

Perform the following steps to install the MOSAIC software:

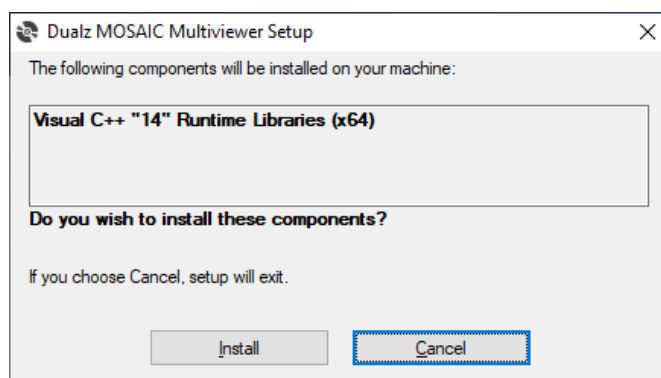
1. Unzip the downloaded package MOSAIC.zip
2. Run "Setup.exe"

Recommended to keep the default installation folders.

NOTE: When using setup.exe, the installation shall, if not already installed, try to install the following required redistributable packages automatically:

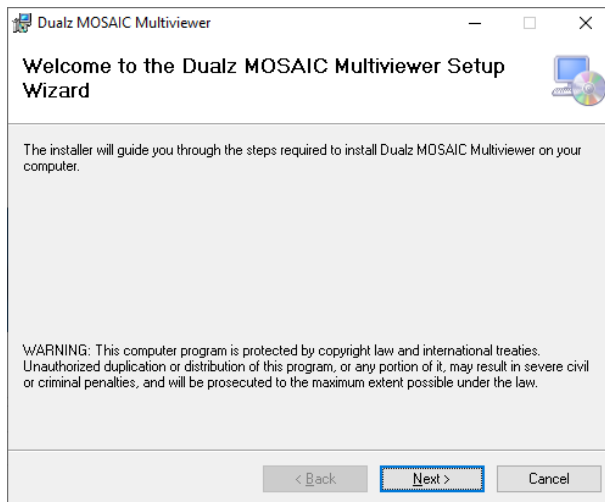
- VC x64, v14 runtime.
- Dotnet runtime 4.7.2

If the following message appears, select "Install"

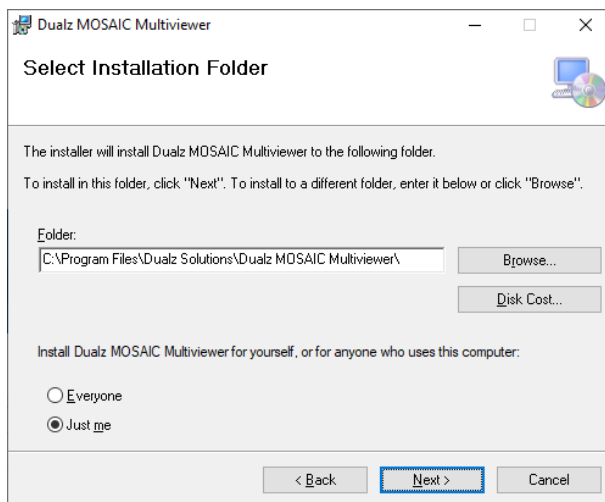


INSTALLATION STEPS

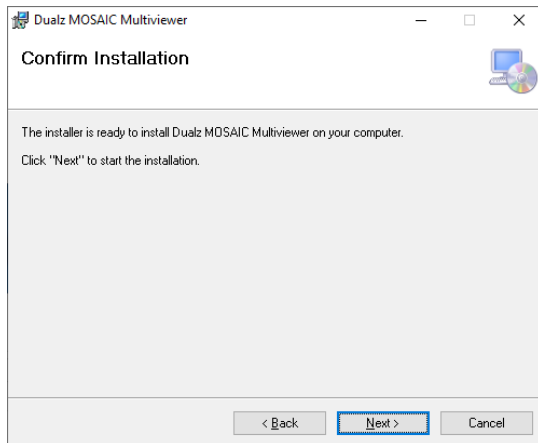
After having installed the pre-requisites, the installation shall continue:



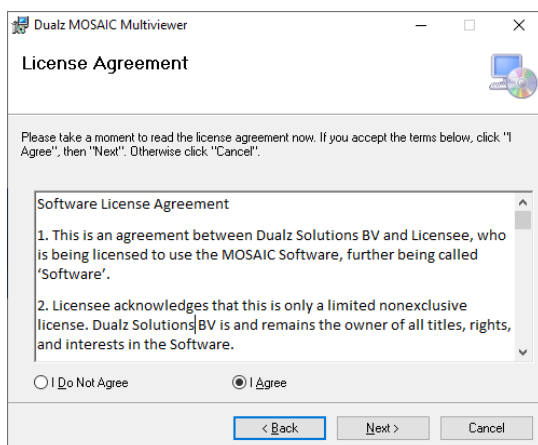
Click "Next"



Select "Next".



Click “Next”



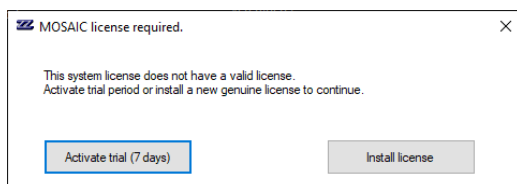
Read the agreement.

Select “I agree” and click “Next”.

Now, the MOSAIC software is installed and it starts the demo setup.

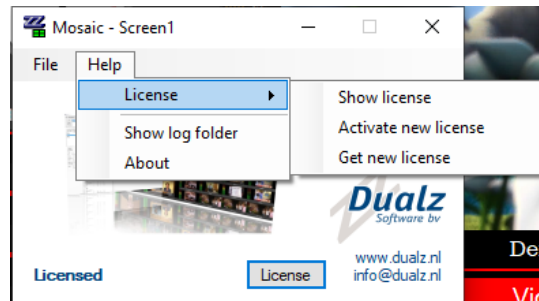
LICENSING VERSUS TRIAL

If you don't have received a license code yet, you can activate a 7 days trial.



Click “Activate trial”. The trial has some visual limitations, and shows popup messages each 5 minutes, but has all the functions activated.

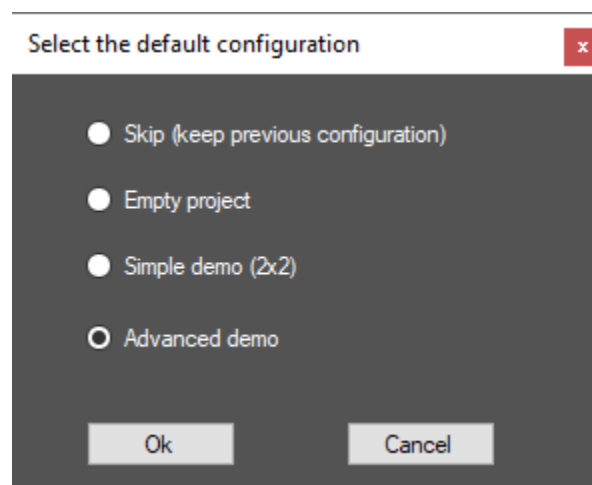
When you received a license key, you can install that via “install new license”, or via the screen application “Help-License-Activate new license” menu.



DEMO SETUP

During installation, you can chose to create a demo setup, or not. The following options are available:

1. Skip (keep previous configuration)
2. Empty projects
3. Simple demo (2x2)
4. Advanced demo



DESKTOP SHORTCUTS

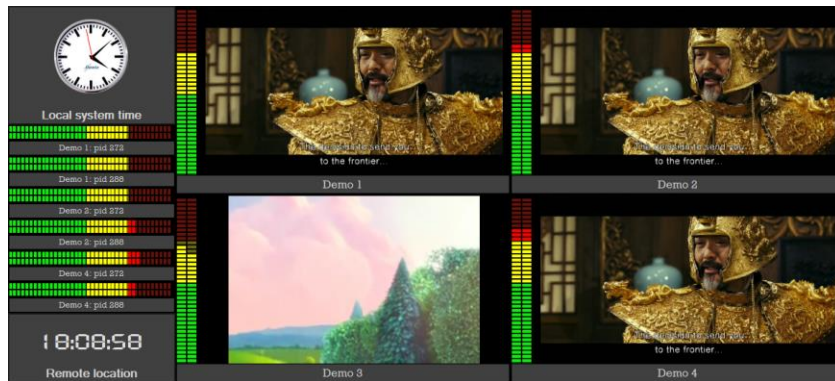
After installation, 4 new desktop shortcuts are created:

- Start mosaic screen1 : Starts the mosaic multiviewer screen
- Mosaic editor: Opens the editor (with the demo information if this was selected).
- Start sample file: Starts the sample stream (multicast over localhost, 127.0.0.1)
- Dualz alarm webserver

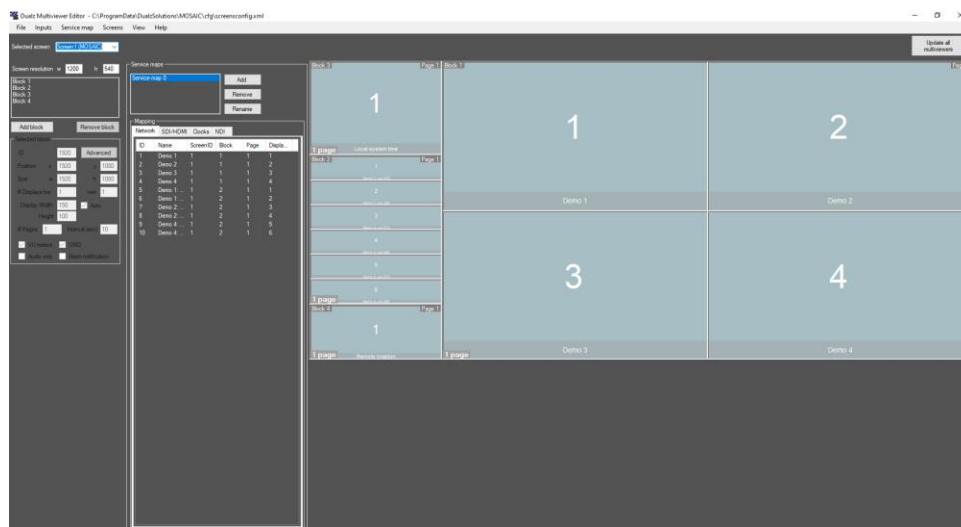
START DEMO

If you selected demo setup, the demo is automatically started, meaning:

- Start mosaic
- Start editor



You can configure the demo setup, by editing the structure using the editor. Don't forget to select "Update all multiviewers" in order to push the configuration to the multiviewer screen.



You can quickly test one of your streams via MOSAIC editor:

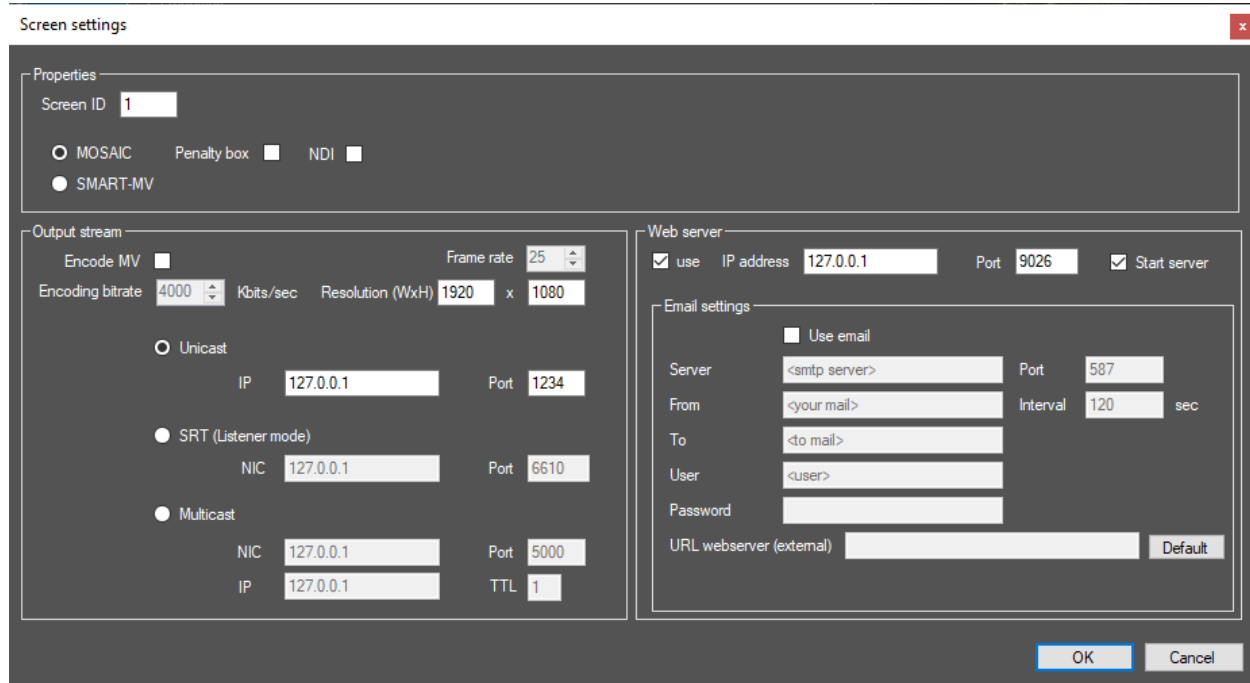
- Open menu “Inputs”
- Double click “Demo 3”
- In “stream”, fill in your url, for example:
 rtsp://18.191.60.12:1935/vod/sample.mp4
 or
 udp://@235.5.5.5:5555
- Select “Save” twice
- Select “Update all multiviewers” (be sure the screen application is running)

Now your stream should be visible. Refer to “Manual MOSAIC editor” for more detailed instructions.

MOSAIC WEB SERVER

By default, in the demo the web server is started by screen 1. You can also explicitly start the webserver separately via “Dualz alarm webser” desktop shortcut, in this case the server is running regardless the screen being alive or not.

In the screens settings you can define the output of the alarms in the screen:



The screenshot shows the 'Screen settings' dialog box with the following configuration:

- Properties:** Screen ID: 1; MOSAIC (unchecked), Penalty box (checked), NDI (checked); SMART-MV (checked).
- Output stream:** Encode MV (unchecked); Frame rate: 25; Encoding bitrate: 4000; Resolution (WxH): 1920 x 1080.
 - Unicast: IP: 127.0.0.1, Port: 1234
 - SRT (Listener mode): NIC: 127.0.0.1, Port: 6610
 - Multicast: NIC: 127.0.0.1, Port: 5000; IP: 127.0.0.1, TTL: 1
- Web server:** use (checked), IP address: 127.0.0.1, Port: 9026, Start server (checked).
- Email settings:** Use email (unchecked); Server: <smtp server>, Port: 587; From: <your mail>, Interval: 120 sec; To: <to mail>; User: <user>; Password: [empty]; URL webserver (external): [empty] Default.

The web server listens to port 9026. Locally, you can open a browser om:

<http://127.0.0.1:9026>

The web browser will show the statuses of your streams. You can access the web server remotely. Note that the port must be forwarded on you router, if accessed from outside your LAN. Also be aware of firewall issues.

<p>1: Demo 1 (trial)</p> <p>Status: Okay (0) Time: 2021-03-24 2:12:08.218</p>	<p>2: Demo 2 (trial)</p> <p>Status: Video loss (401) Time: 2021-03-24 2:12:08.415</p>	<p>3: Demo 3 (trial)</p> <p>Status: Okay (0) Time: 2021-03-24 2:12:08.417</p>	<p>4: Demo 4 (trial)</p> <p>Status: Video loss (401) Time: 2021-03-24 2:12:08.607</p>	<p>5: Demo 1: pid 272 (trial)</p> <p>Status: Audio loss (402) Time: 2021-03-24 2:12:08.406</p>
<p>6: Demo 1: pid 288 (trial)</p> <p>Status: Audio loss (402) Time: 2021-03-24 2:12:08.600</p>	<p>7: Demo 2: pid 272 (trial)</p> <p>Status: Audio loss (402) Time: 2021-03-24 2:12:08.800</p>	<p>8: Demo 2: pid 288 (trial)</p> <p>Status: Audio loss (402) Time: 2021-03-24 2:12:08.975</p>	<p>9: Demo 4: pid 272 (trial)</p> <p>Status: Audio loss (402) Time: 2021-03-24 2:12:09.118</p>	<p>10: Demo 4: pid 288 (trial)</p> <p>Status: Audio loss (402) Time: 2021-03-24 2:12:09.301</p>