



MOSAIC

MPTS demux

CONTENTS

Introduction	2
MPTS gateway.....	2
Check Dektec input ID.....	2
Create ASI => IP gateway	2
MPTS Demux	3
Add TS	3
Start all analyzers.....	4
MOSAIC settings.....	4

Dualz Solutions BV
Witvrouwenbergweg 12
5711 CN Someren
info@dualz.nl

INTRODUCTION

This document describes how to feed the MOSAIC multiviewer with a Multi Program Transport Stream (MPTS). Input can be IP, ASI, DVB-S/S2, DVB-T/T2.

We have 2 options in order to support MPTS input feeds:

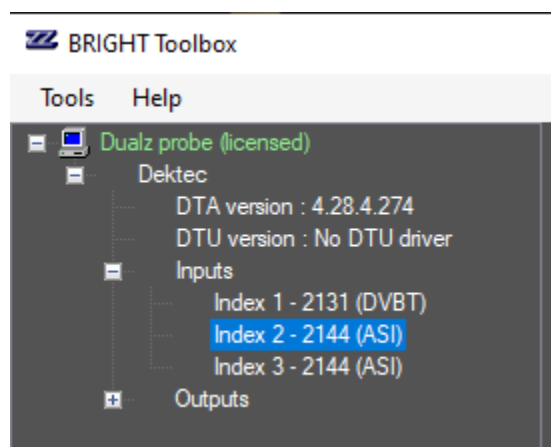
- MPTS Gateway (complete TS via BRIGHT toolbox)
- MPTS Demux (Separate services via SMART)

MPTS GATEWAY

The MOSAIC multiviewer accepts IP feeds only. In order to also accept input feeds from RF or ASI signal, Dektec input cards are supported. Use BRIGHT toolbox, in order to send the incoming MPTS to internal IP.

CHECK DEKTEC INPUT ID

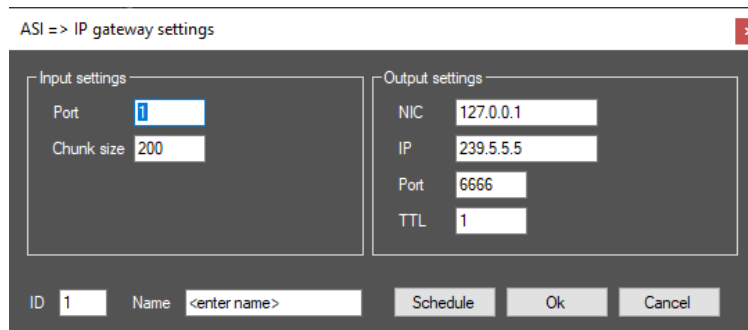
If the system has a dektec card installed, check the Dektec input ID:



CREATE ASI => IP GATEWAY

Right click on the probe level, and select "ASI => IP", fill in the specific Dektec ID, and (internal) IP output settings.

Now, the MOSAIC can read the inputs from this MPTS feed.



NOTE: Using this option results in multiple tiles in MOSAIC reading the same (high bandwidth) input streams, that can decrease performance. In order to solve this, use “MPTS demultiplexing” using SMART Lite, see next chapter.

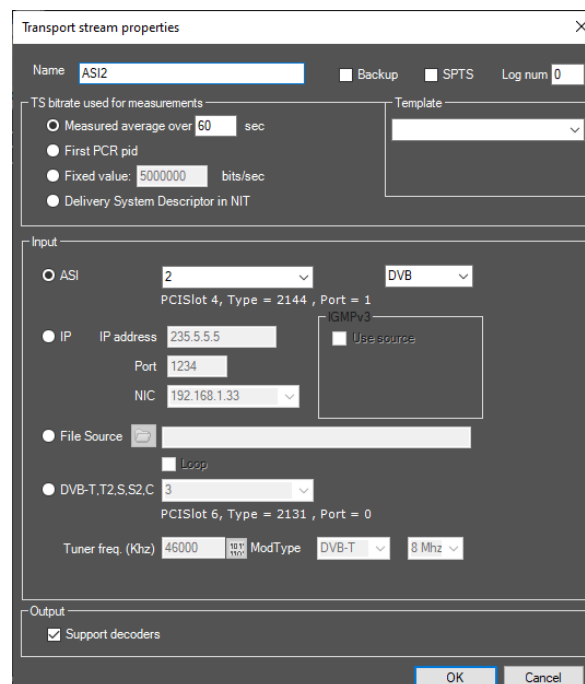
MPTS DEMUX

In SMART Lite, a MPTS input feed can be selected from IP, ASI, DVB-S/S2/T/T2, or file. Refer to SMART user manual, for a detailed description of SMART features. In this document we will only address the needed function for the MPTS demultiplexing, in order to feed MOSAIC with separate services originating from MPTS.

ADD TS

In SMART:

- In Configuration mode, right click on Probe level (highest tree node), select “Add transport Stream”.
- Fill in an appropriate name, and fill in the specific input settings, and press “OK”:



Now, the SMART is reading the incoming transport streams, and automatically recognizes the included services.

START ALL ANALYZERS

In order to start the service demultiplexing:

- Right click on transport stream level and select “Start all Analyzer”.
- Use the default alarm settings, and press “Ok”.

Now the service demultiplexing is done, each service is sent to a different port on local host (127.0.0.1).

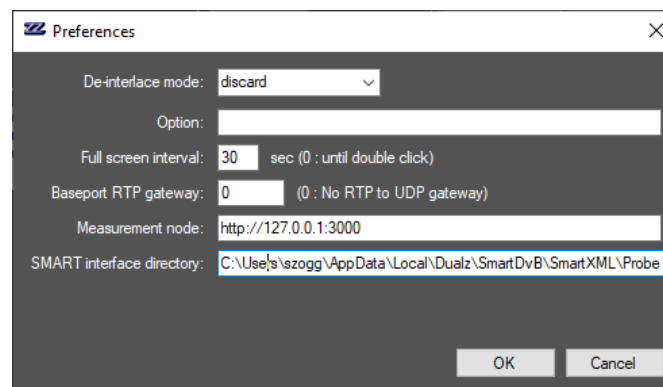
The service map is stored in an xml file at location:

C:\Users\

You need this file path, to enter in preferences form in the MOSAIC editor.

MOSAIC SETTINGS

In MOSAIC preferences, fill in the xml file from previous section, in field “SMART interface directory”:



If the file is recognized, the service network can be imported from this interface. Select “Service network”, and press button “Import From SMART”. All services from SMART are automatically imported in the service network list, including the required settings, like input port and program number, audio PID etc..

ID	Name	Type	Description	Prog ID
1	Demo 1	Network	srt://127.0.0.1:6610	
2	Demo 2	Network	udp://@235.5.5.5:5556	
3	Demo 3	Network	https://bitdash-a.akamaihd.net/conten...	
4	Demo 4	Network	udp://@235.5.5.5:5556	
5	Demo 1: pid 272	Network	udp://@235.5.5.5:5556	
6	Demo 1: pid 288	Network	udp://@235.5.5.5:5556	
7	Demo 2: pid 272	Network	udp://@235.5.5.5:5556	
8	Demo 2: pid 288	Network	udp://@235.5.5.5:5556	
9	Demo 4: pid 272	Network	udp://@235.5.5.5:5556	
10	Demo 4: pid 288	Network	udp://@235.5.5.5:5556	
11	Local system time	Clock		
12	Remote location	Clock		
13	Program 1	Network	udp://@235.5.5.5:2654	1

Add Edit Remove Remove all Import from SMART

Save Cancel

DUALZ SOLUTIONS BV
WITVROUWENBERGWEG 12

5711 CN SOMEREN
WWW.DUALZ.COM
INFO@DUALZ.NL
