

Dualz



SMART LITE

Quick Start Guide

CONTENTS

Introduction	3
Installation & Configuration	3
Recommended Operation System	3
Software installation	3
Licensed or demo mode	3
Key installation	4
Programs menu	4
SMART about box	5
Configuration SMART	6
Add TS analyzer	6
Start service analyzers	7
Decoding one service	8
Configuration multiviewer	9

INTRODUCTION

This document describes how to get the SMART Lite software up and running quickly.

This manual describes the installation for version SMART probe 2.9.3.172 and higher.

INSTALLATION & CONFIGURATION

RECOMMENDED OPERATION SYSTEM

The software is running in all windows versions:

NOTE: In Server OS Win2012 you'll need the feature 'User Desktop Experience' enabled in the Server Manager.

Recommended Operating System is Win10 prof 64 bit.

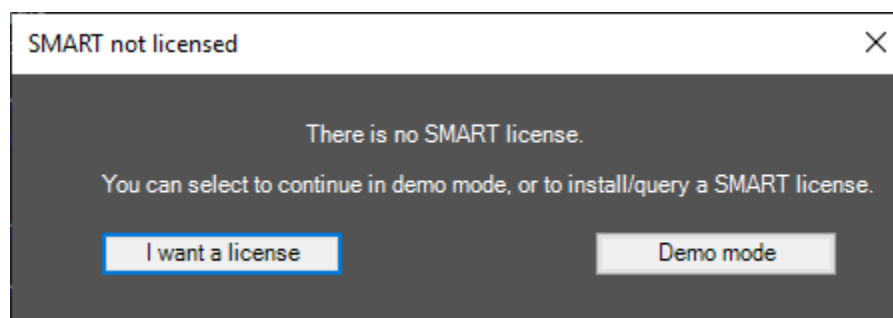
SOFTWARE INSTALLATION

- Install SMART probe demo: ProbeDemo.msi

Recommended to keep the default installation folders.

LICENSED OR DEMO MODE

If SMART is running for the first time, and no license has been installed yet, you will get the option to run in demo mode. In demo mode only file based transport streams can be configured. The demo has a default stream and setup automatically installed.



Press "Demo mode" in order to try the application. All functions (Lite version) are enabled, but only on file based input.

If you need a license, select "I want a license". Fill in the license form, and select whether you want to obtain a perpetual license, or purchase a temporary license. Lifetime license prices are mentioned on the website www.dualz.com.

SMART License request form

System query

Number of MPTS Number of SPTS

Total number of services

Triggered recording (max 2 streams)
 Email alarm notification

Interface

IP (Ethernet card)
 Dektec (DVB-T/S/C, ASI or IP)

Dektec serial

Company info

Company name

E-mail

Address 1

Address 2

City

Country

VAT id. (optional)

Additional remarks / wishes

I want to purchase a temporary licence for months
 I want to purchase a lifetime licence

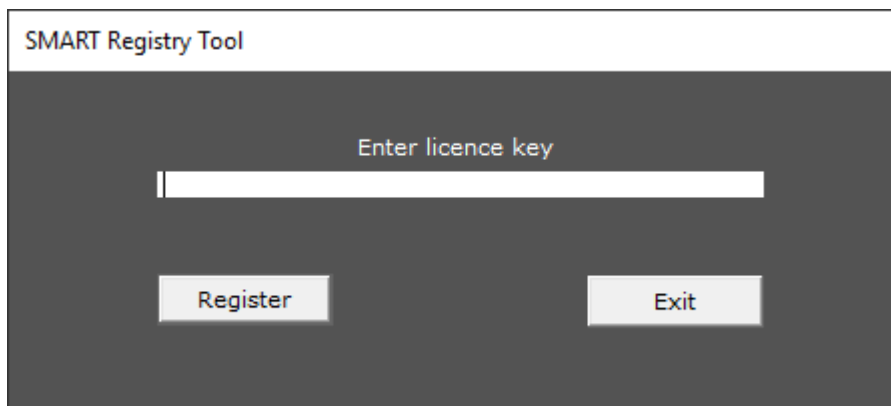
If you select “Get a quote/license” a mail will be sent to sales@dualz.nl automatically. If no internet connection is possible, the information can be copied, in order to sent the request later.

KEY INSTALLATION

There are 2 ways to install a SMART license:

PROGRAMS MENU

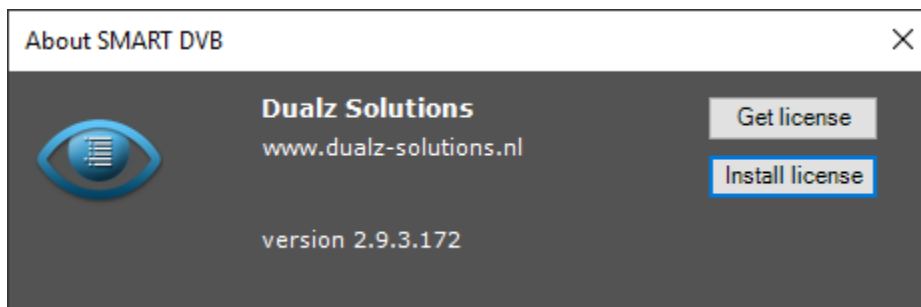
1. Run Programs menu – Dualz Solutions – Smart Register.
2. The following form is shown:



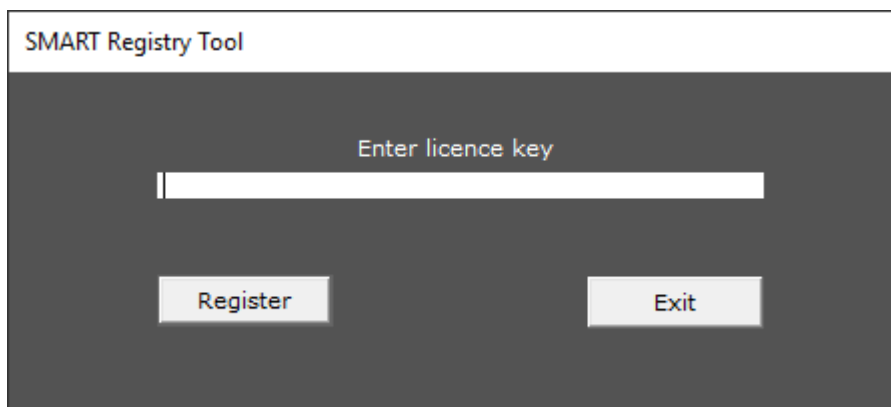
3. Enter the license key you received from your reseller, and press “Register”.

SMART ABOUT BOX

1. When running SMART, select “Help->About”.
2. Select “Install license”



3. The following form is shown:



4. Enter the license key you received from your reseller, and press “Register”.

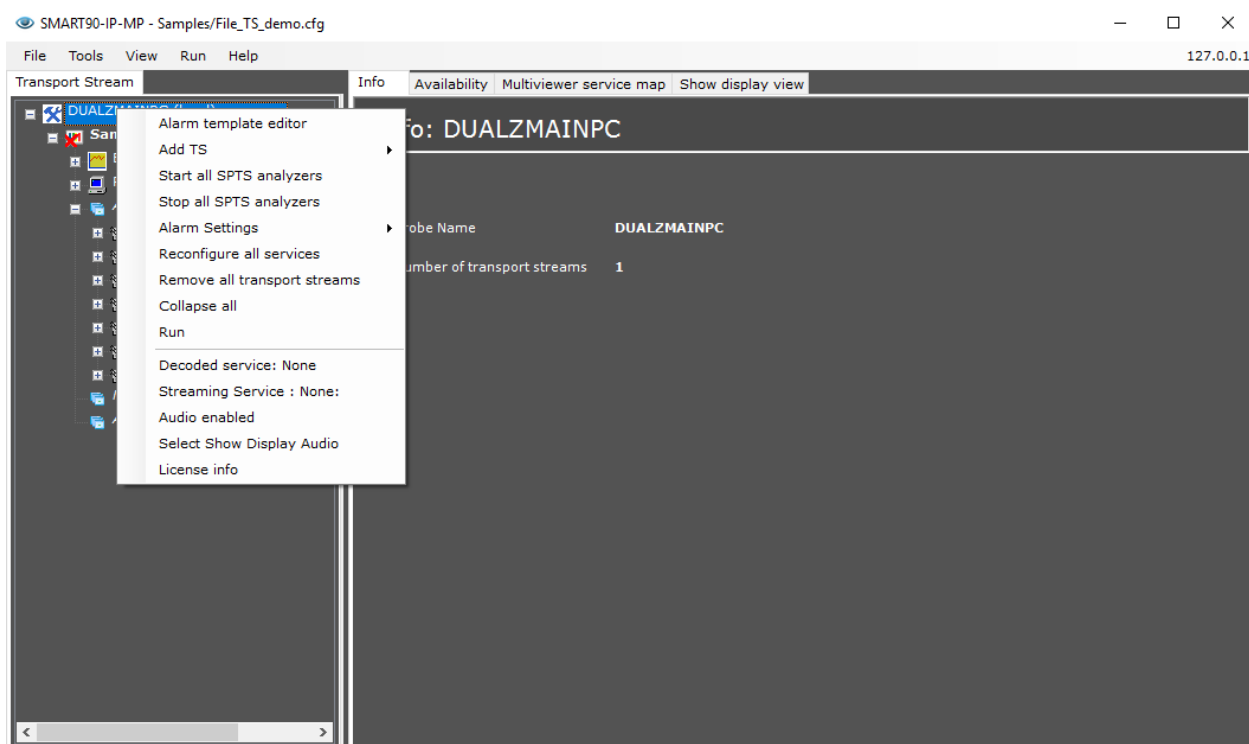
CONFIGURATION SMART

Once registered correctly, the SMART system is ready for configuration, which is simple. You'll just need to add a transport stream, from a source (IP, ASI, DVB-T/S/C or file), and the SMART probe will automatically read the transport stream and including services and components.

Service selection for analysis/monitoring , and/or multiviewer is just a couple of clicks away.

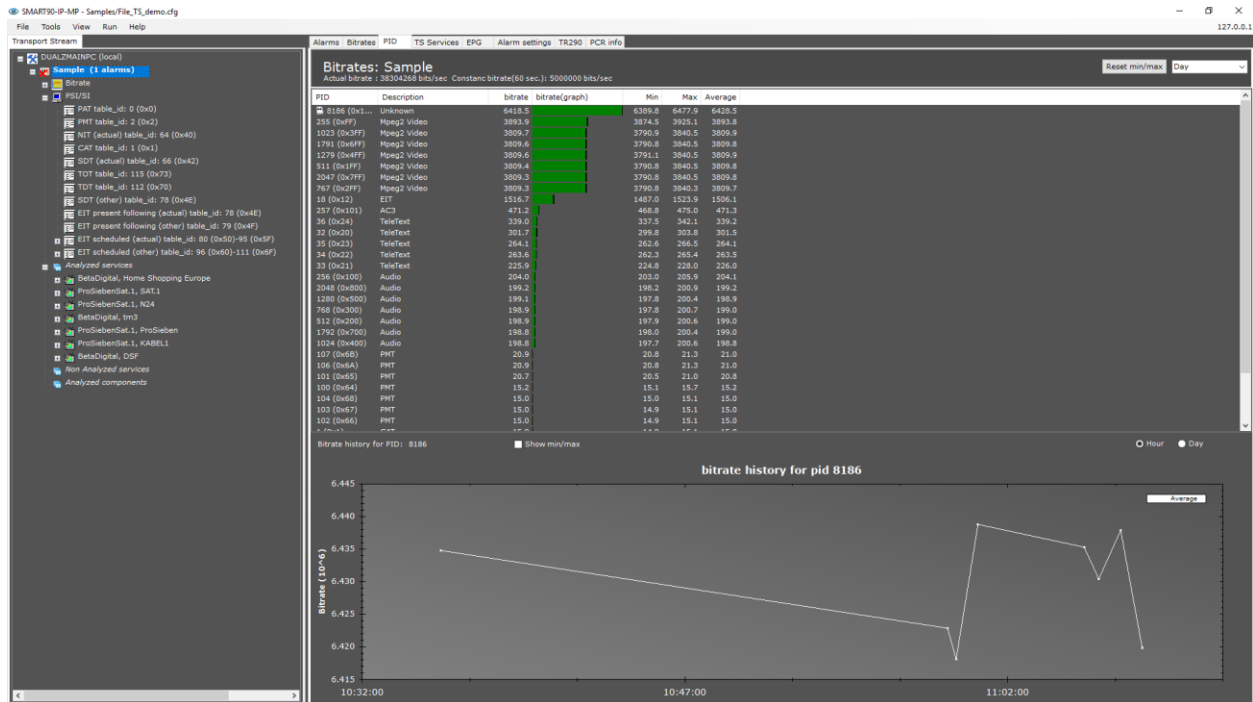
ADD TS ANALYZER

- Start SMART via shortcut on desktop
- Click "Configuration mode"
- Right click on top tree node level:



- Select Add TS->Add TS
- Enter a new name for the TS, and select the proper source and settings (NIC, ASI, DVBT/S/C or file).
- Select OK

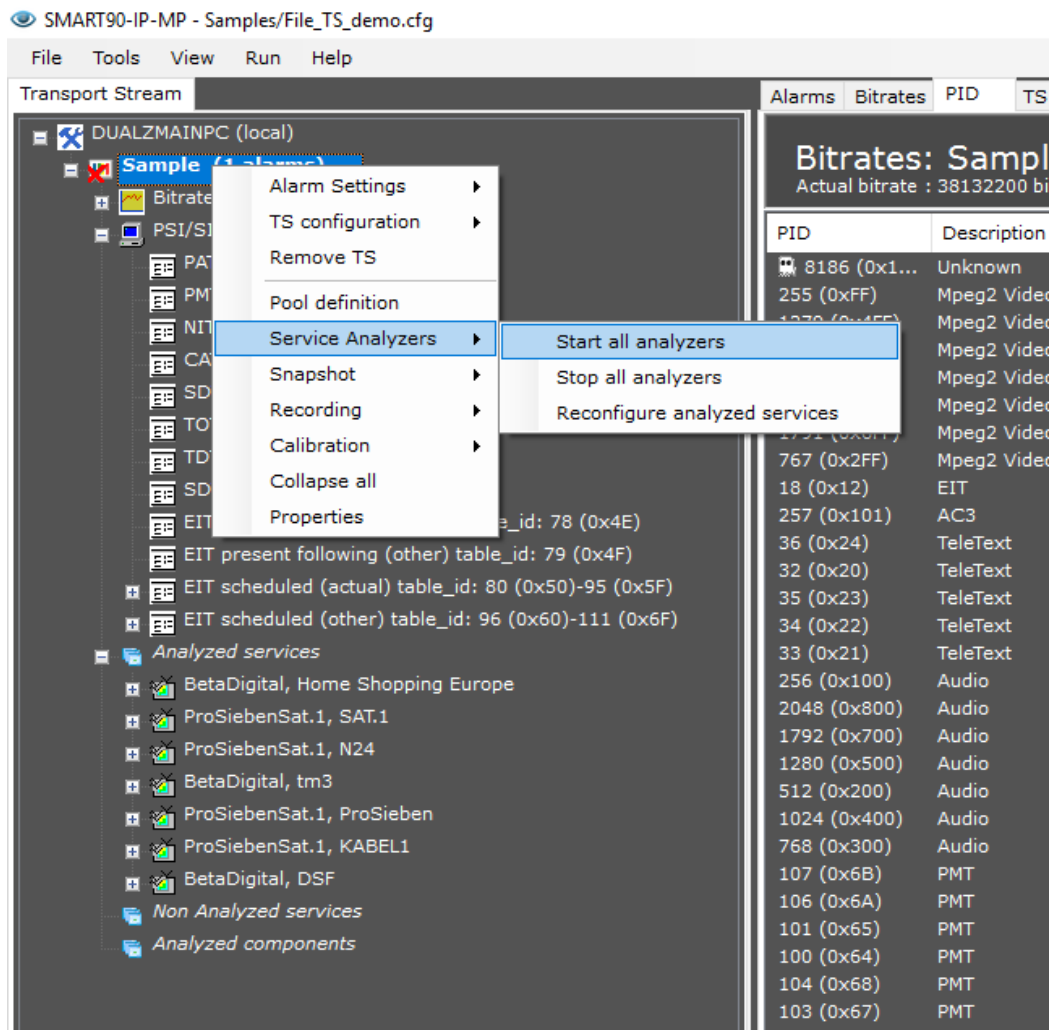
Now, the SMART probe is analyzing the transport stream:



START SERVICE ANALYZERS

SMART recognizes all services and components automatically, these can be selected for analyzing/monitoring.

- Right click on TS level:



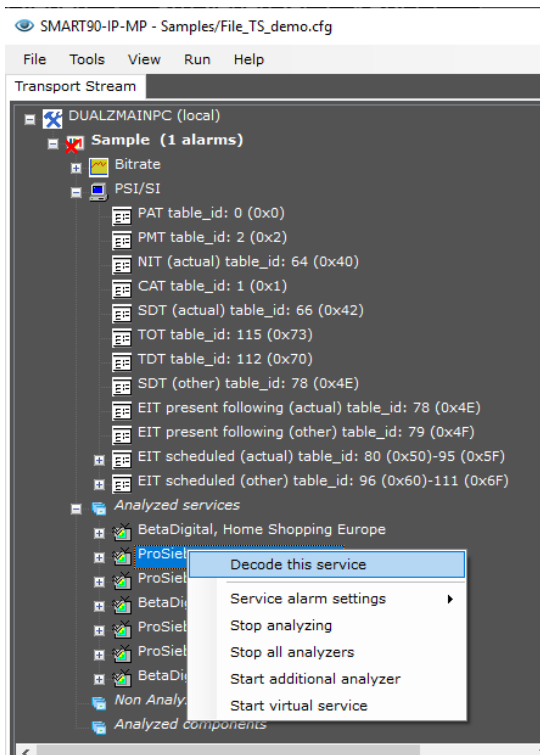
- Select "Service analyzers" -> Start all analyzers
- Press OK twice

Now all services are added to the "Analyzed service" section.

DECODING ONE SERVICE

If you need to display one service, this can be done:

- Right click on the service in the tree:



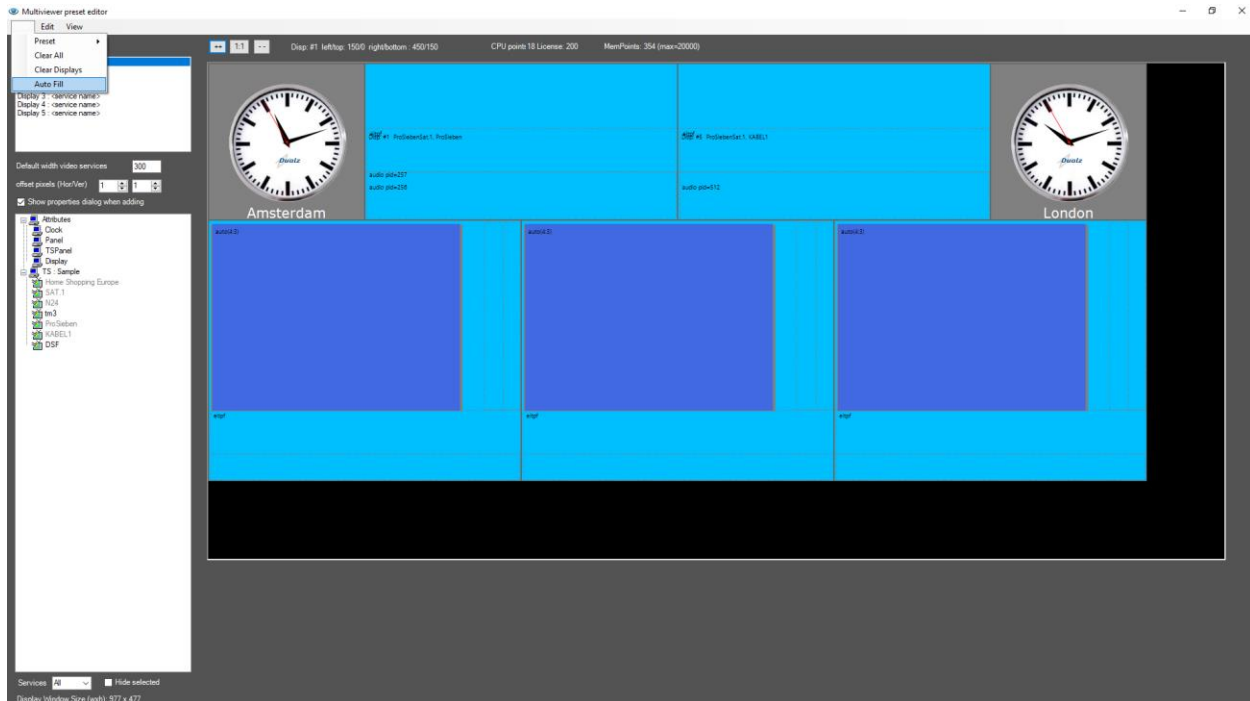
- Select “Decode this service”.
- Select View” ->Show Display

Now this service is shown in a separate display:



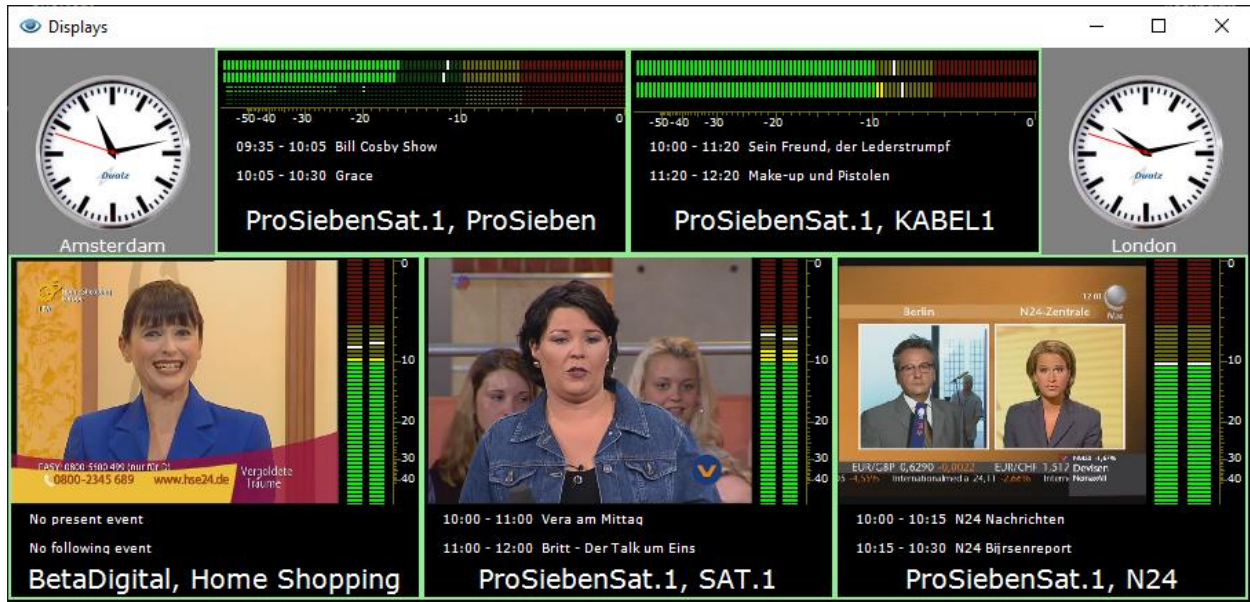
In the multiviewer preset editor, you can define the layout of your multiviewer.
In this quick start guide, we'll show the auto fill function only.

- Select tools -> Multiviewer preset editor
- In the Multiviewer preset editor, select File-> Autofill



- Unselect "iframe only", for full decoding video
- Select "Ok"
- Close the multiviewer preset editor.
- Select "yes"
- In main probe UI select "Run" mode

Now, in the multiviewer window the new layout appears:



Note that in (Configuration mode) Tools -> Settings -> Monitors, the window layout settings of the multiviewer screen can be entered (separate window, position, size, window dialog, or panel, background color etc).