

CLEVER PSI/SI

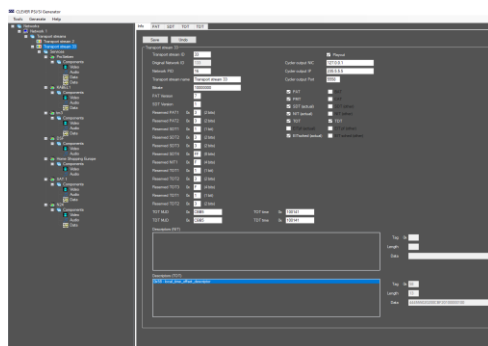
Software or appliance

Linear broadcast services require Program Specific Information/System Information (PSI/SI) as an essential part of the stream. Tuning information as well as Electronic Program Guide (EPG) can be generated by the Dualz "CLEVER" PSI/SI Generator. The Dualz PSI/SI Generator conforms to MPEG and DVB standards. Generated tables include PAT, PMT, TOT, TDT, CAT, BAT, NIT, SDT, EIT pf/scheduled and more, actual as well as others. Dualz PSI/SI Generator imports data from several interfaces, from file (XML) or REST API interfaces.



CLEVER PSI/SI generator prepares and 24x7 delivers your DVB transport stream metadata, including private and public descriptors. Static network and transport stream setup as well as Electronic Program Guide (EPG) information. It supports interfaces for event injection via the EIT generator.

CLEVER engine and cycler are implemented in cross platform implementation, meaning that they can run in Windows or Linux environment, on-premise or in the cloud. The engine runs in headless mode, The user interface can run remotely.



CLEVER Lite

- Windows
- Software-only
- Easy installation
- Unlimited transport streams input
- Support for other tables
- Transport stream output
- IP, File output
- Unlimited output bitrate

CLEVER PRO 24x7

- Windows / Linux
- Client / server (headless)
- Appliance or software-only
- EIT segmentation support
- Event injection interface
- Seamless data changes
- Support for other tables
- Unlimited transport streams
- Unlimited networks
- Unlimited output bitrate
- Output: IP, File, ASI, RF
- DVB-T/T2, DVB-S/S2, DVB-C, ISDBT
- Redundancy support
- One year support included

